

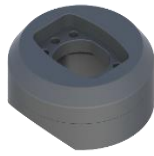
ALM.090.680

Ø136X100 VERTICAL PANEL INPUT APPARATUS 10° SLOPING

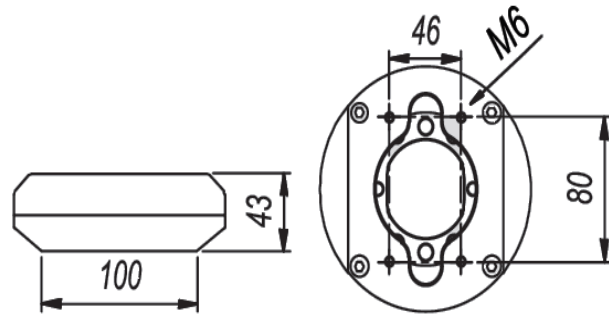
The panel vertical entry apparatus provides the connection between the operator panels and the operator arms. The product's max. diameter is Ø136mm.

Our apparatus allows fixed type of connection.

This apparatus is specially designed for panels with a minimum depth of 100. (Example ALM.1120 Series)



ALM.090.680



DRAWING