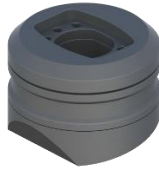


## ALM.090.650

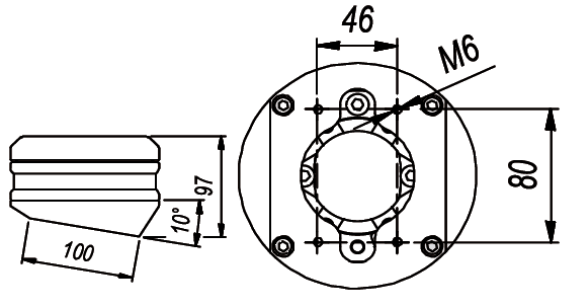
### Ø136 X 100 VERTICAL PANEL INPUT 325° 10° ANGLE

The panel vertical entry module provides the connection between the operator panels and the operator arms. The product's max. Its diameter is Ø136 and the rotation angle around its axis is 320° in total. Thanks to the self-rotation feature of the module, the machine operator can turn the direction of the panel he is using to the right-left and position it accordingly. This module is specially designed for panels with a minimum depth of 100. (Example OPK.1120 Series)

With this product, you can give your panel a fixed tilt of 10°.



ALM.090.650



DRAWING