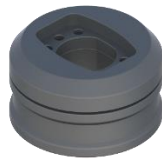


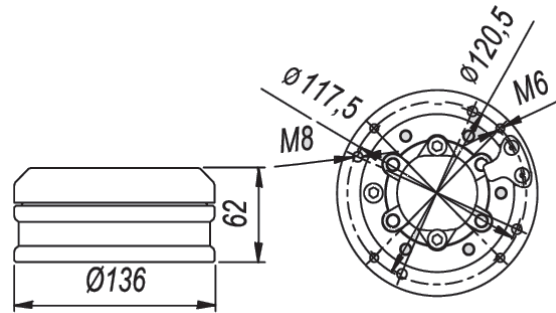
ALM.090.630

Ø136 VERTICAL PANEL INPUT 325°

The panel vertical entry module provides the connection between the operator panels and the operator arms. The product's max. diameter is Ø136 and the rotation angle around its axis is 320° in total. Thanks to the rotation feature of the module, the machine operator can position the panel he is using by turning the direction of the panel to the right or left. This module is specially designed for panels with a minimum depth of 150mm.



ALM.090.630



DRAWING