

ALM.090.125

ALM.090 Series Operator Arms are designed for Control Panels with Heavy Weight and Large Dimensions.

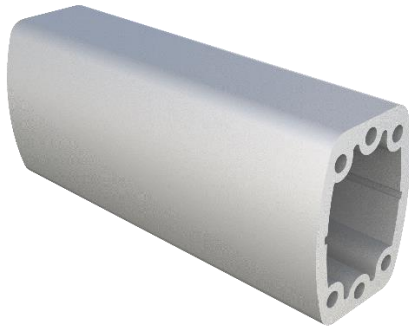
Thanks to its durable structure, it is ideal for long distance arm applications.

Offering a modular solution as well as a modern stance, ALM.9010 series operator arms can offer dozens of different configuration solutions with wide component arm groups.

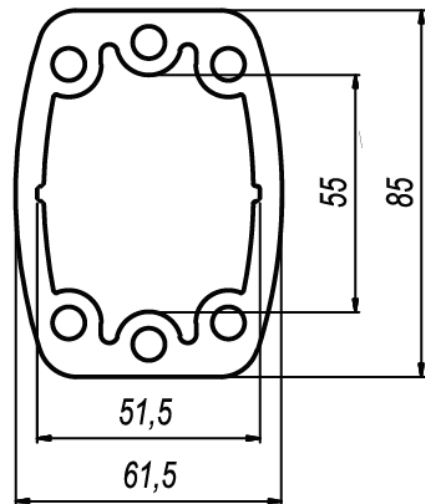
1 mt profile length has a load carrying capacity of 120 kg.

RAL 7035 RAGGED paint is used in our products.

It has IP65 Protection class.



ALM.090.125



FRONT VIEW

ALUMINUMARM SUPPORT ARM AND ENCLOSURE

www.aluminumarm.com

info@aluminumarm.com