

ALM.060.650

Ø105X100 VERTICAL PANEL COUPLING 10 ° SLOPING

ALM.060.650 Ø105X100 Vertical Panel Coupling 10 ° Sloping provides the connection between the operator panels and the operator arms.

The product's max. diameter is Ø105mm.

Our apparatus allows fixed type of connection.

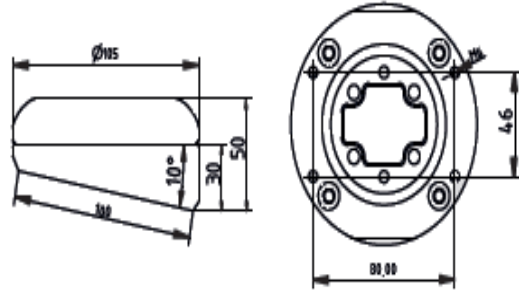
This apparatus is specially designed for panels with a minimum depth of 110mm.

With this product, you can give your panel a fixed inclination of 10°.

This product is compatible with the ALM.1120 Series...



ALM.060.650



DRAWING