

ALM.060.630

Ø136 VERTICAL PANEL 10° SLOPING

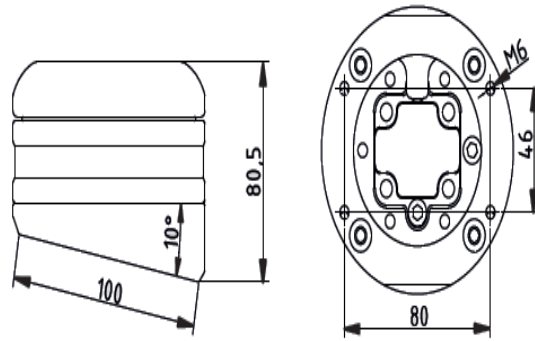
The panel vertical entry module provides the connection between the operator panels and the operator arms. The product's max. Its diameter is Ø105 and the rotation angle around its axis is 320° in total. Thanks to the self-rotation feature of the module, the machine operator can turn the direction of the panel he is using to the right-left and position it accordingly. This module is specially designed for panels with a minimum depth of 110mm.

With this product, you can give your panel a fixed inclination of 10°.

This product is compatible with the ALM.1120 Series..



ALM.060.630



DRAWING

ALUMINUMARM SUPPORT ARM AND ENCLOSURE

www.aluminumarm.com

info@aluminumarm.com