

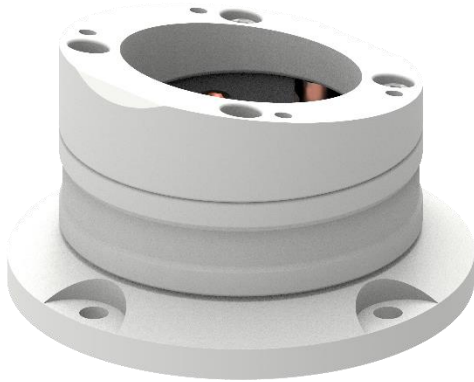
## ALM.060.330

### Ø105 PANEL COUPLING 310° 10° SLOPING

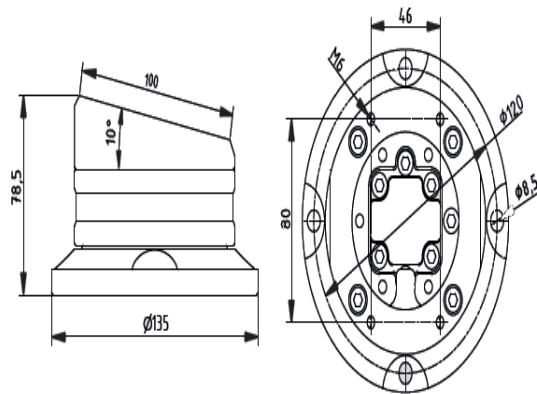
ALM.060.330 PANEL COUPLING 10° SLOPING, is designed for situations where the connection point is close to eye level (such as a table top). .

With this product, you can give your panel a fixed sloping of 10°.

This product is compatible with the ALM.1120 Series.



**ALM.060.330**



**DRAWING**

**ALUMINUMARM SUPPORT ARM AND ENCLOSURE**

[www.aluminumarm.com](http://www.aluminumarm.com)

[info@aluminumarm.com](mailto:info@aluminumarm.com)