

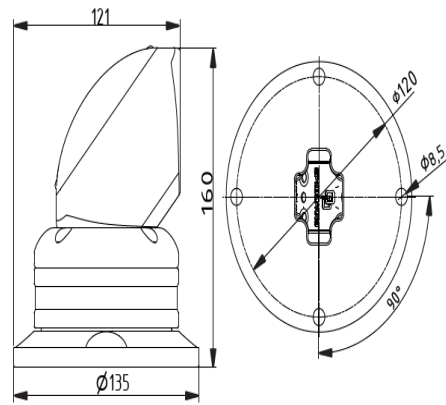
ALM6010.300

TOP-MOUNTED JOINT HORIZONTAL OUTLET 310°

ALM.6010.300 Top-Mounted Joint Horizontal Outlet 310° is used in higher connection points on the machine, such as top at the machine, module can rotate 310° , thanks to support arm system to be placed horizontally.



ALM.060.300



DRAWING